

# Improve health equity for all populations



Health disparities impact individuals, families and communities. They result from pervasive social, economic or environmental disadvantages, including poverty, structural racism and discrimination.

Achieving health equity means every person has a fair and just opportunity to become as healthy as possible.

The Health Equity Alignment Solution (HEALS), a data analytics solution, highlights where and how inequities occur within a community, state or a health plan's member population.



**Identify health inequities**

.....



**Provide agencies and health plans with actionable analytic insights**

.....



**Promote alignment with your population health objectives**

---

## Why is HEALS needed?

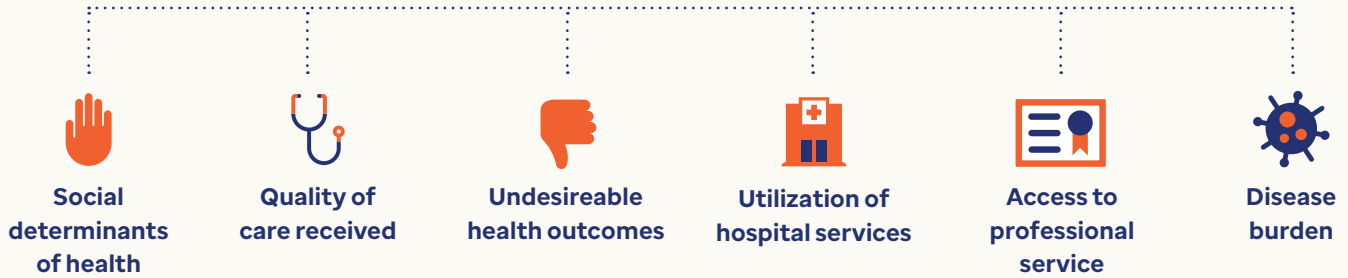
Health equity is achieved when every person has the opportunity to attain their full health potential and no one is disadvantaged because of their social position or circumstances.

HEALS enables you to find the health inequities and geographic disparities in communities you serve and focus on the communities most at risk for inequitable health care outcomes.

HEALS leverages the Optum Symmetry Suite of medical claim groupers to measure the health care status and quality of care members receive. HEALS also incorporates the Area Deprivation Index (ADI) to measure the social determinants of health impacting residents of different communities. The ADI ranks neighborhoods by socioeconomic disadvantage, including rankings of income, employment, education and housing quality. HEALS uses these rankings in the cost, quality and access measures included in our solution.

# An analytic approach to solving health inequity

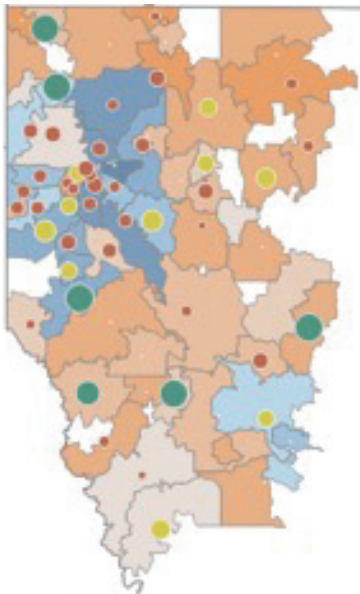
HEALS examines health equity at a ZIP code level, using 6 domains:



For each domain, HEALS includes multiple metrics to quantify the interaction of residents in that ZIP code with the health care system. HEALS then ranks selected metrics in each domain to identify ZIP codes with the most health inequities. You can then use the actionable analytics included in HEALS to develop strategies to improve health equity.

## Patient(s) hospitalized for mental illness that had a follow-up encounter with a mental health practioner within 30 days after discharge.

By ZIP code in Louisiana



ADI legend



Adherence rate



HEALS visualizes disease burden, utilization, access and quality of care in the context of the social determinants of health.

## Develop and monitor your health equity strategy

HEALS also incorporates your provider network data to identify potential partners to provide care to members in those areas most impacted by health inequities. You can plan your strategy for addressing health inequities to target programs to those members most at risk. HEALS will allow you to track your progress as you work to improve health equity, as the tool is updated with more recent data on a quarterly or monthly basis.

For more information, visit [optumserve.com](https://optumserve.com).



[optum.com](https://optum.com)

Optum is a registered trademark of Optum, Inc. in the U.S. and other jurisdictions. All other brand or product names are the property of their respective owners. Because we are continuously improving our products and services, Optum reserves the right to change specifications without prior notice. Optum is an equal opportunity employer.

© 2023 Optum, Inc. All rights reserved. WF9293108 02/23